



COME
GROW
WITH US

State of the City Address

February 10, 2011

New Residential Homes

2010 Building Permits

<u>Year</u>	<u>New residential units</u>
2006	56
2007	29
2008	24
2009	23
2010	17

**\$2,873,788 in value or
an average \$169,046 per unit**

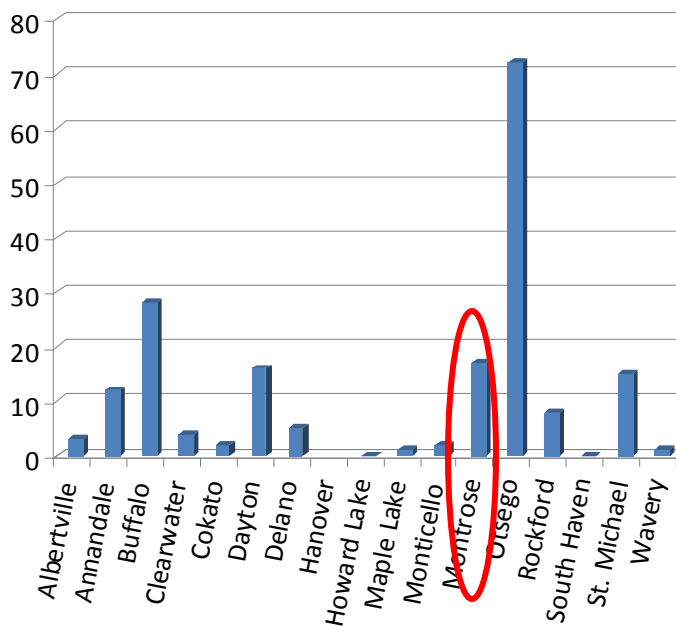
- 149 new residential units over the past 5 years.
- Estimated 345 new residents (based on 2.32 p.p.h.)
- 2009 State Demographer Est. Population = 2,556
 - 1.104 households

3rd Highest in Wright Co.

2010 Building Permits

City	#
Albertville	3
Annandale	12
Buffalo	28
Clearwater	4
Cokato	2
Dayton	16
Delano	5
Hanover	
Howard Lake	0
Maple Lake	1
Monticello	2
Montrose	17
Otsego	72
Rockford	8
South Haven	0
St. Michael	15
Waverly	1
Total Hsg Units	186

New Residential Building Permits 2010



Source: Phone Survey by MDG, Inc.

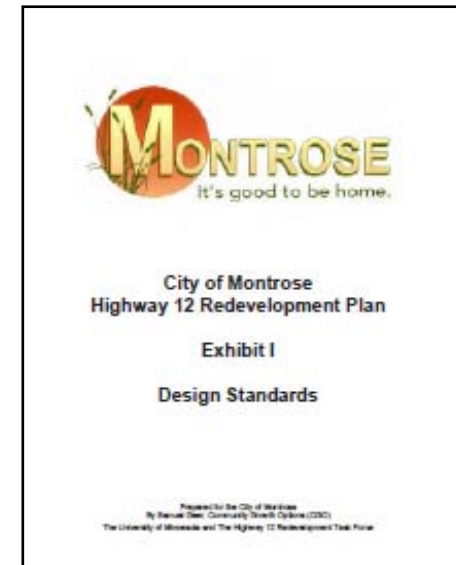
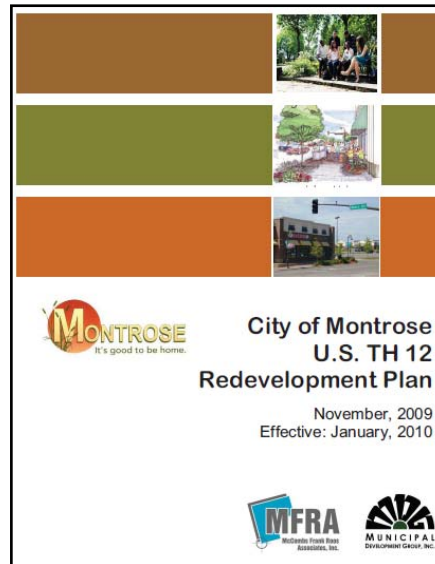




COME GROW WITH US

Highway 12 Implementation

Highway 12 Redevelopment Plan and Design Manual Adopted



\$10,000 Grant received from the Initiative Foundation for Highway 12 Redevelopment Implementation Planning & Engineering



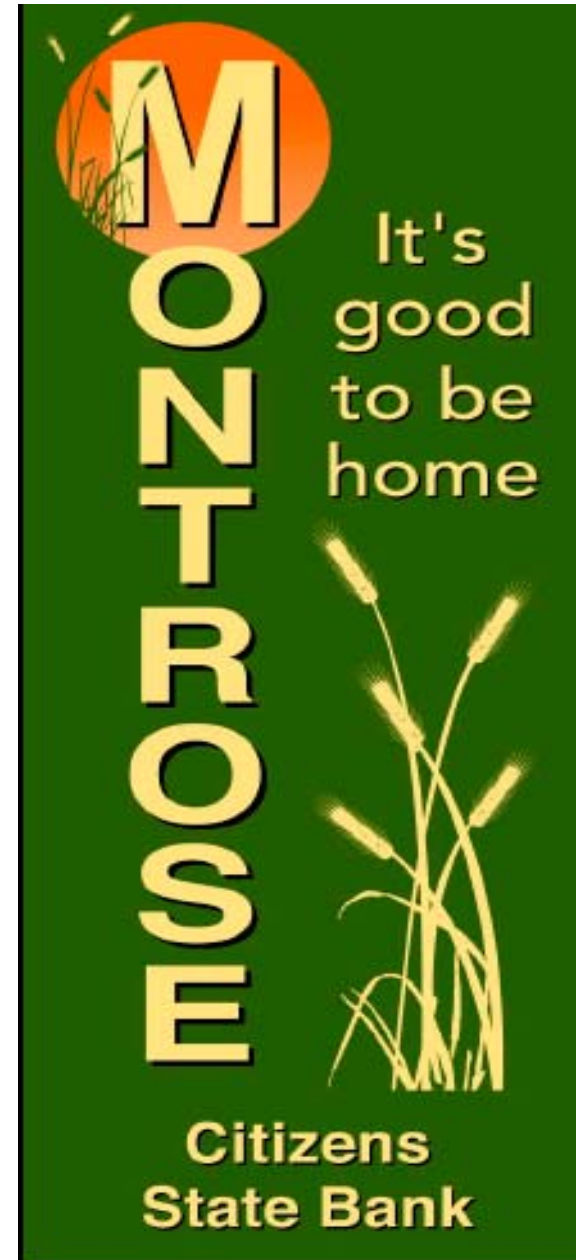
COME GROW WITH US

Banners

**Adopt a Banner Program
Raised \$2800**

Sponsors:

Citizens State Bank
Great Northern Bar and Grill
Jeff-Ex
Marketon's Body Shop
Montrose Lions
Montrose Chiropractic
Scott's Glass & Mirror
Varner Mobile Services
City of Montrose



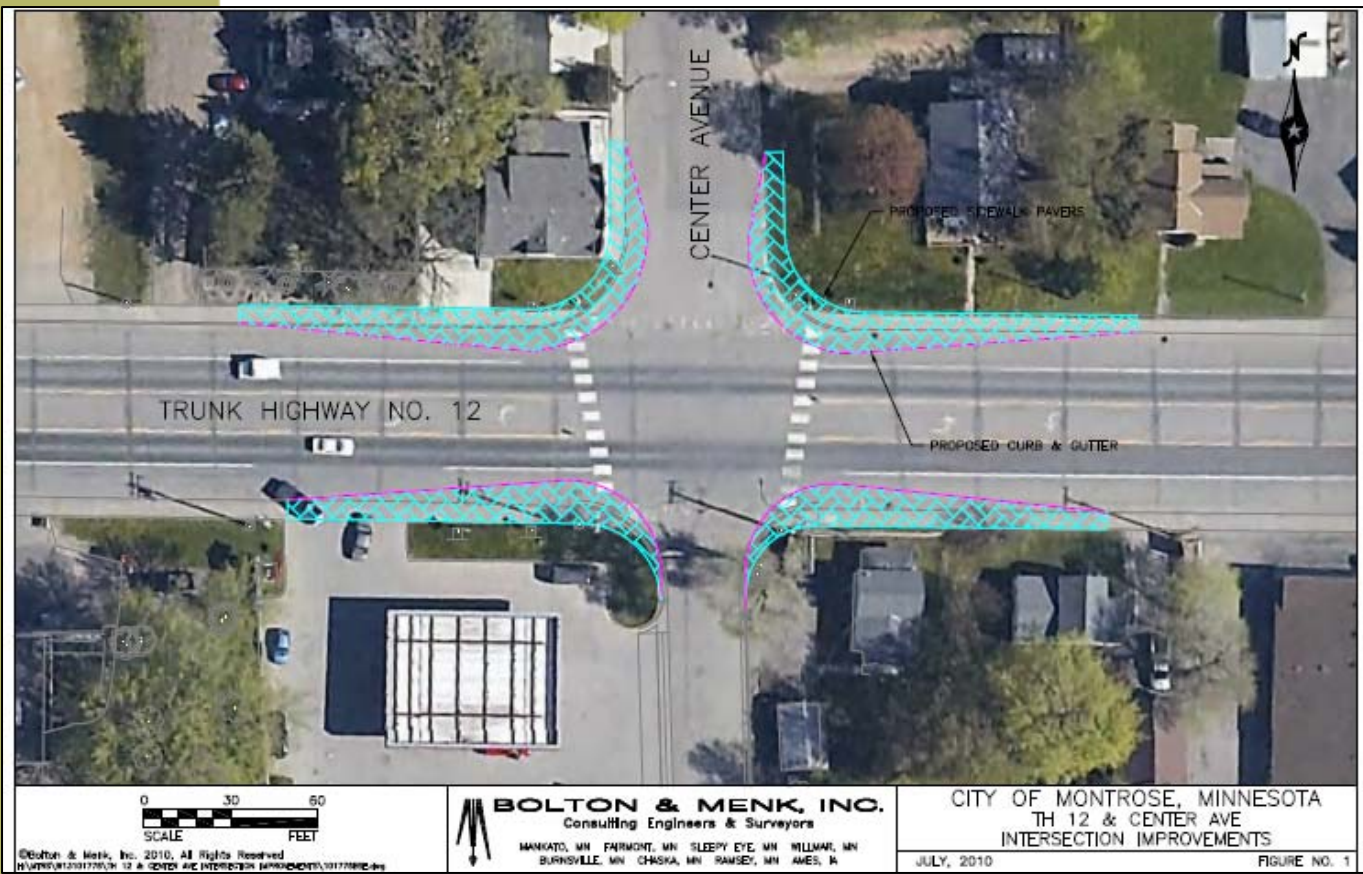
Streetlight Pole Painting



COME GROW WITH US



Center Avenue Planning & Engineering



Purpose

- *Traffic Calming
- *Increase Safety for pedestrians creating a (walkable downtown & community)
- *Visual Cue for the arrival into the "downtown"
- *Create an area for aesthetic improvements

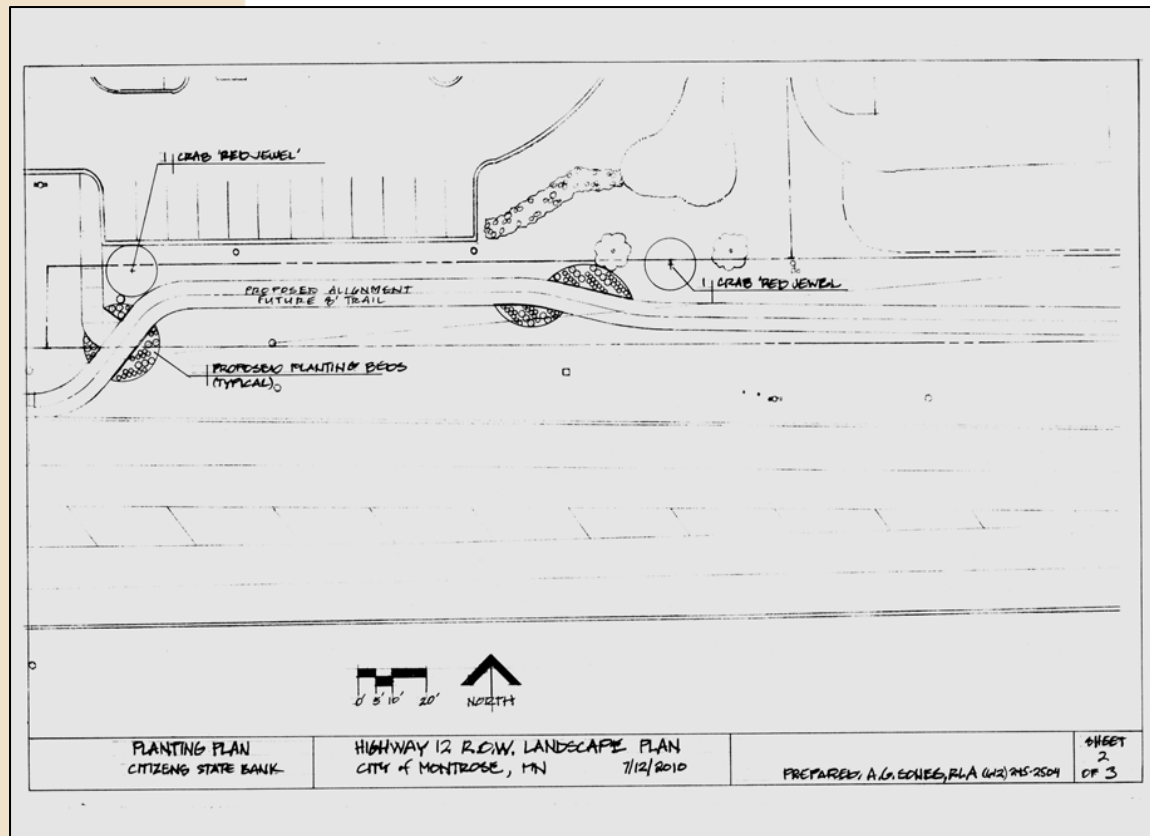
Working on Bid Documents for a potential 2011 Project





COME GROW WITH US

Trail & MnDOT Cooperative Landscape Grant



Highway 12 Trail & Landscape Plan

- Planning in 2010 for a proposed trail on the east side of Montrose from Citizens Bank to Jeff Ex.

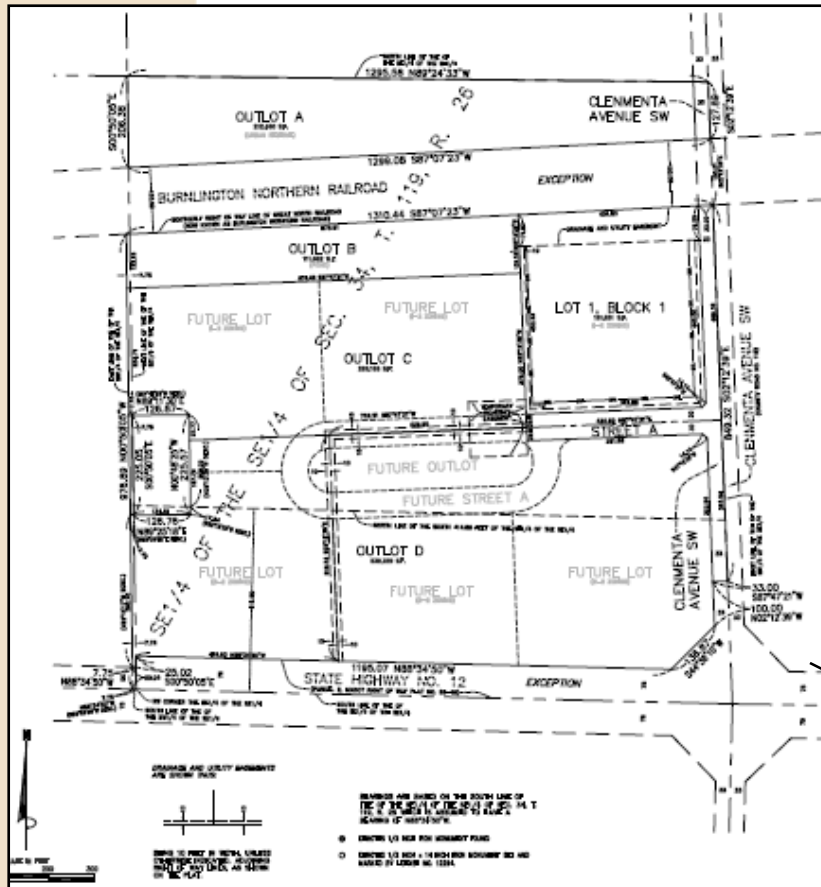
- Bidding the project in 2011

***\$3000 Grant from MNDOT approved** for plant materials for a fall 2011 planting to be completed by volunteers.



COME GROW WITH US

Grant for New Montrose Business Park

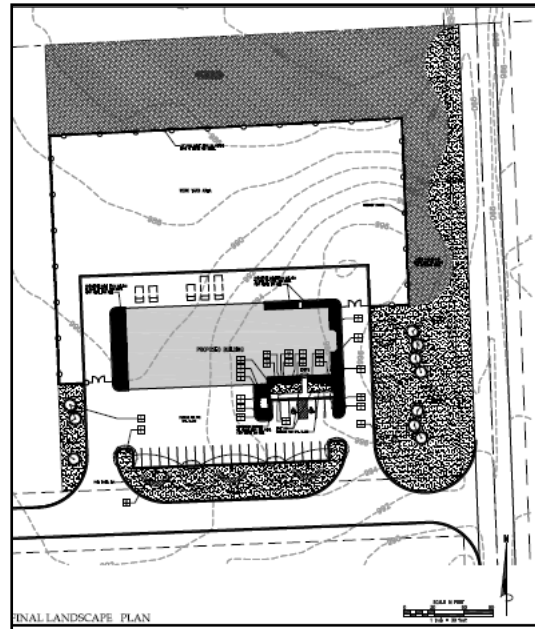


City awarded a **\$427,300** grant for public infrastructure from the MN Dept. of Employment and Economic Development

New “Montrose Industrial Park”
35 acres zoned Highway Commercial (along Hwy 12) and Industrial (to the north)



New Industrial Business

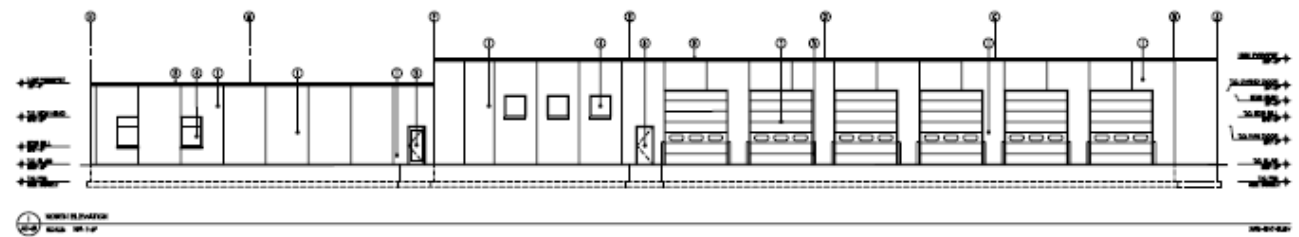


Montrose welcomes Xcel Energy!

- New 15,000 sq. ft. facility on 4.2 acres currently under construction
- 10 full time jobs with wages ranging from \$40,000 to \$85,000 per year plus benefits.
- It is estimated the site will increase in market value from the 2010 value of \$339,800 to an estimated \$1,058,800
- Increase in property taxes from \$3,742 to \$82,674 for the industrial park, including this project.
- Groundbreaking ceremony held in December, 2010

COME GROW WITH US

Under Construction..



New Montrose Early Education Center



Before

Former vacant, non-conforming industrial building (adjacent to the Elementary School and residential properties) redeveloped into an Early Education Center.

Opened in September 2010.

Landscape Structures donated playground equipment for the center.

After

COME GROW WITH US





COME GROW WITH US

City Marketing Campaign

CLEARCHANNEL

Build Your Future Here

City of

MONTROSE
MontroseMN.com

30 Minutes West of the Cities

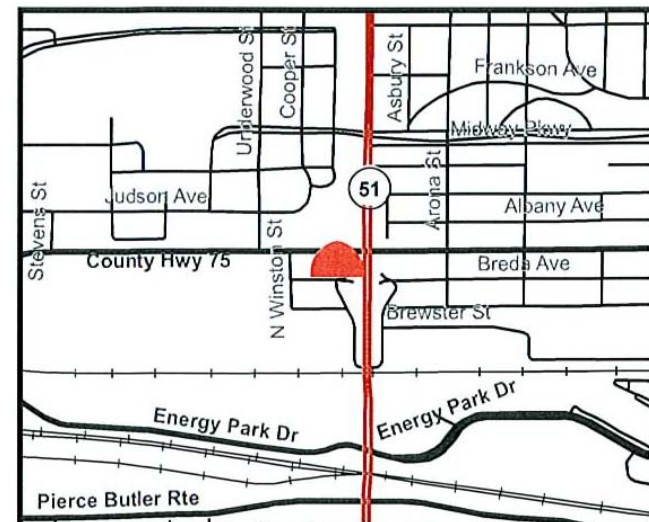
Billboards- placed at strategic metro locations to target market families to move to Montrose!

CLEARCHANNEL

Build Your Future In Natural Beauty

City of

MONTROSE
Montrose-MN.com





COME GROW WITH US

Community Events

Various organizations coordinated a number of community events, including but not limited to:

Clean up Day

Earth Day

Soup Kitchen

Spaghetti Dinner (Sukuki Kids)

Women's Night Out

Montrose Days

National Night Out

M-W Chamber Chili Challenge

M-W Chamber Arts/Crafts Show

Breakfast with Santa

Christmas Lighting Contest



Financial Strength

- The City was given an A+ credit rating from Standard & Poor's for excellent financial reserves and very strong wealth future.
- The City adopted a 0% levy increase for 2011.

City Council - 2011

Contributions from outgoing 2009-2010 Council Members Sharon Knodel and Ryan Andreae were appreciated.

2011 New Council Members

Roy Henry and Scott Czanstowski

Were welcomed by

Mayor Andy Kauffman and council members
Jeff Petersen and Scott Jensen

EDA Primary Goals - 2011

Business Recruitment

- ☞ Craft Pattern & Mold will be moving into the vacant “Stock Lumber” building this summer
 - ☞ Retail projects pending

Highway 12 Redevelopment Implementation

- Center Avenue bump-outs
- East Highway 12 trail
- **Marketing Montrose**
 - Commercial/Industrial & Residential markets